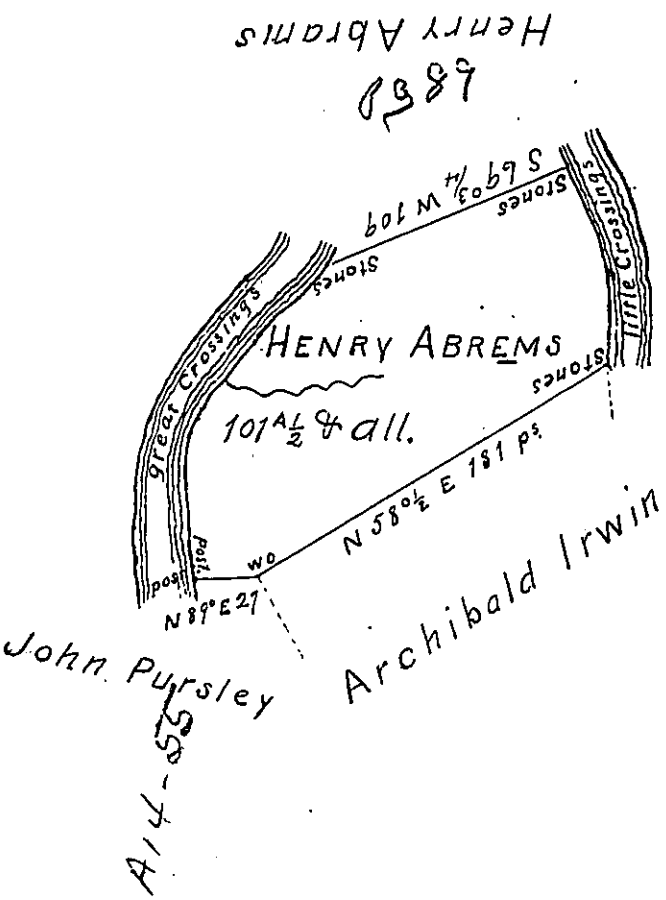


Courses & Distances up
the River
S 39° W 85.4
S 32° W 34
S 24½° W 19.5
S 5° E 19.8
to Post
Corner of John Pursley



Courses & Distances
Down the River
N 4° W 18
N 6½° W 20.6
N 8½° W 18.2
N 13½° W 18.6
N 24° W 22.8
to Stones

Situate between the Great and little Crossings
of Youghiogeni River near Turkey foot in Turkey
foot Township Bedford County & Surveyed the 7th
& 8th days of April 1790 In pursuance of a War-
rant, dated the 31st day of July 1787

To Daniel Brodhead Esquire
Surveyor General
By Alexander McLean Deputy

IN TESTIMONY that the above is a copy of the original remaining on file in
the Department of Internal Affairs of Pennsylvania, made
conformably to an Act of Assembly approved the 16th day of
February, 1833, I have hereunto set my Hand and caused
the Seal of said Department to be affixed at Harrisburg,
this fourth day of August 1903.

George B. Brown
Secretary of Internal Affairs.